

# CERTIFICATE OF LOCATION OF GOVERNMENT CORNER

County of Anoka

State of Minnesota

West 1/4 Corner of Sec. 5 Township 32 Range 23

~~3-5-11~~ I hereby certify that on the 20th day of July, 1964, I found the described corner which was  
~~4-18-11~~ evidenced by a granite

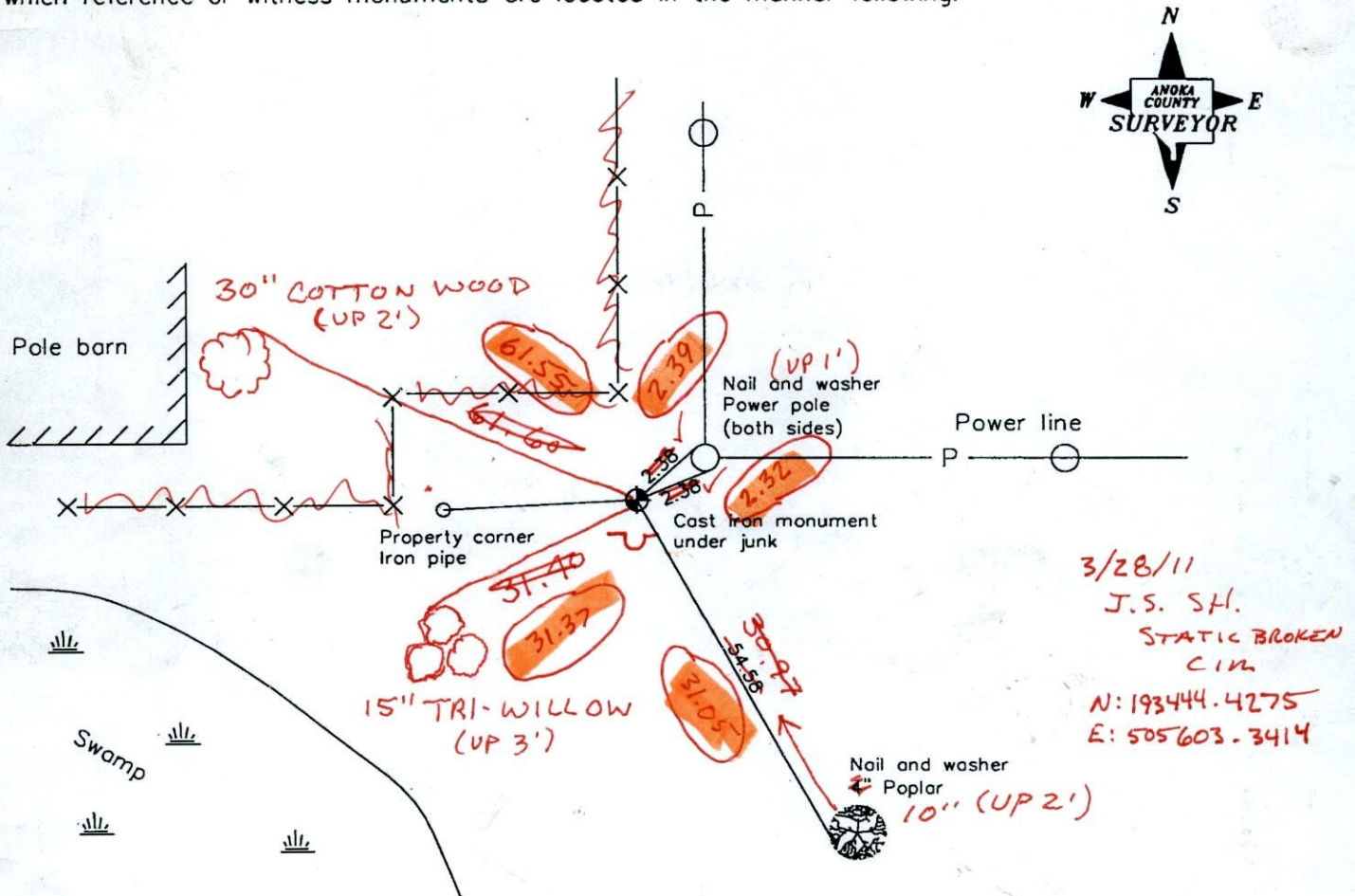
**REMOVED BROKEN C.I.M. REPLACED NEW SOLID C.I.M. SIGN & POST ON SOUTH SIDE**

and I further certify that to perpetuate the location of said corner, I did, at the exact location thereof, place a permanent marker consisting of a cast iron monument

**(TOP BROKEN OFF! - BOTTOM STILL GOOD (RESET))**

**ADD SIGN & POST**

which reference or witness monuments are located in the manner following:



3/28/11  
 J.S. SH.  
 STATIC BROKEN  
 C.I.M.  
 N: 193444.4275  
 E: 505603.3414

BK-55  
 TAPED  
 Revised date

**4-18-11**  
**VRS COORDS**  
**TO NEW**  
**SOLID C.I.M**

N.A.D. 1983 Coordinates  
 (1996 adjustment)

11/07/90
8/08/96
8/15/96
3-11-11

County Project Coordinates	State Plane Coordinates
Northing 193444.4617	Y _____
Easting 505603.2928	X _____
<del>193444.4608</del>	

**505603.2809** Date 8/15/96

**3D QUALITY 0.09**



# CERTIFICATE OF LOCATION OF GOVERNMENT CORNER

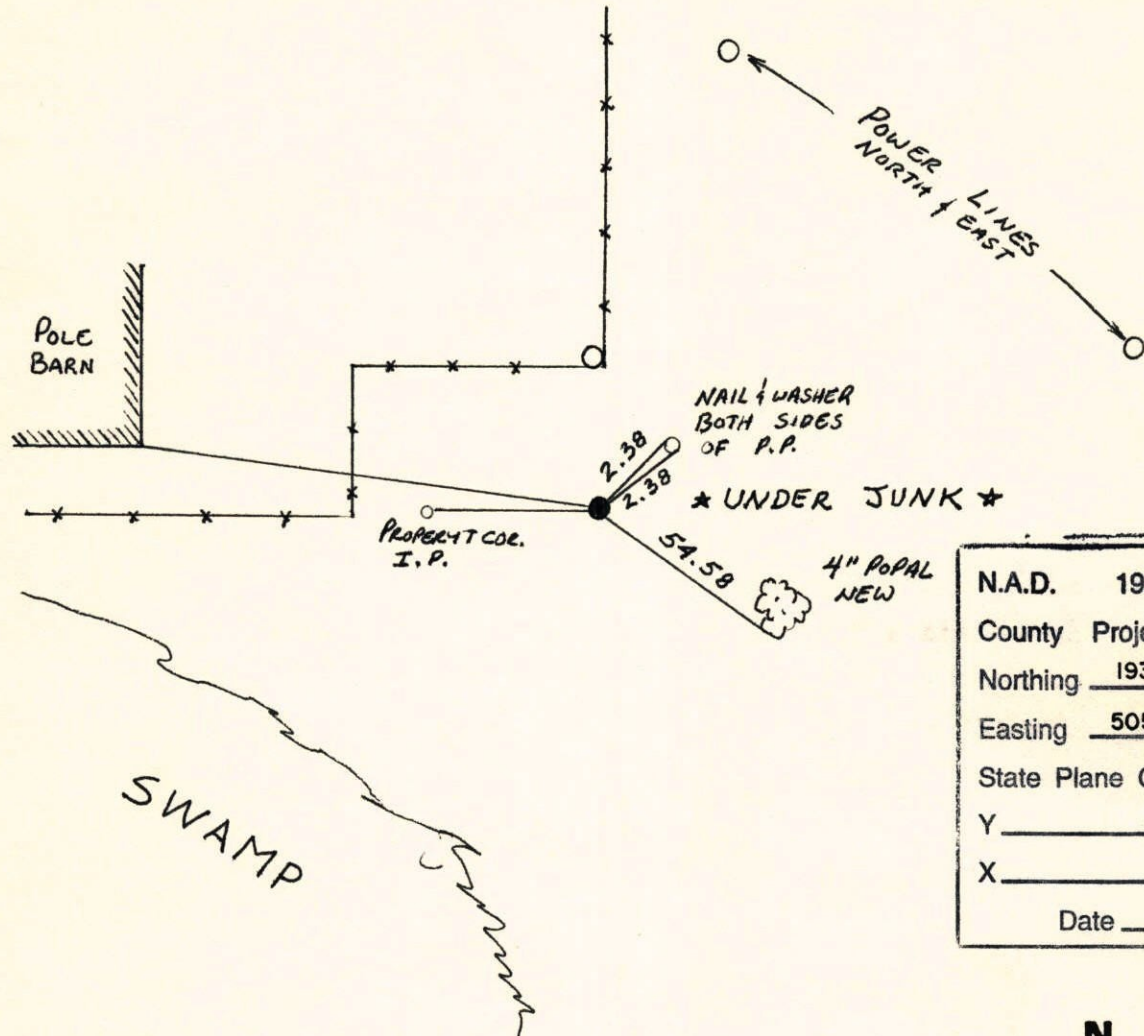
County of Anoka                      State of Minnesota

WEST QTR. Corner of Sec. 5 Township 32 Range 23

I hereby certify that on the 20 day of JULY, 1964, I found the described corner which was evidenced by GRANITE

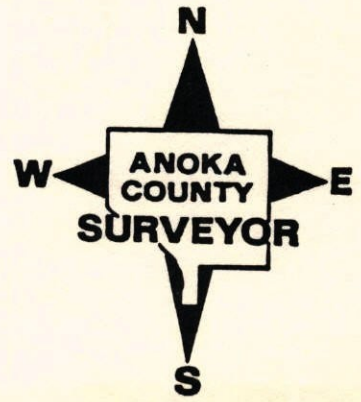
and I further certify that to perpetuate the location of said corner, I did, at the exact location thereof, place a permanent marker consisting of CAST IRON MON.

which reference or witness monuments are located in the manner following:



N.A.D.	1983	Co-ordinates
County	Project	Co-ordinates
Northing		<u>193444.4617</u>
Easting		<u>505603.2928</u>
State Plane Co-ordinates		
Y		_____
X		_____
Date _____		

Revised date	Revised date	Revised date
11-7-90		
8-8-96		
8-15-96		

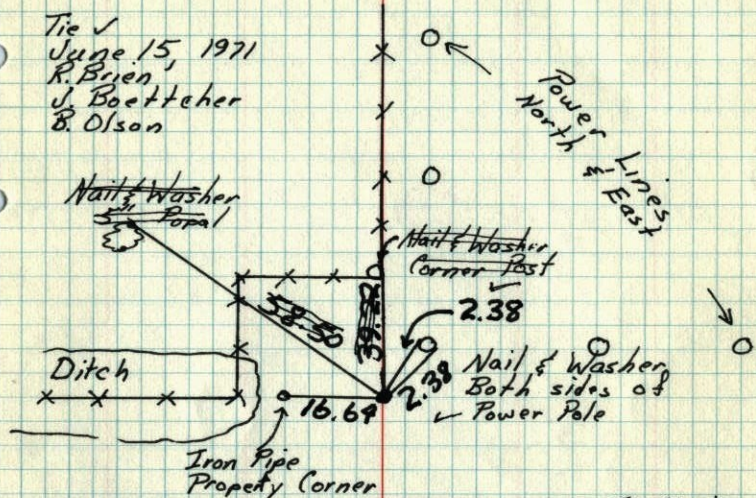




W $\frac{1}{4}$  Cor. Sec 5-T32-R23

found granite monument leaning.  
Replaced granite with Cast Iron  
Monument up 0.1' from ties.

Tie ✓  
June 15, 1971  
R. Brien,  
J. Boettcher  
B. Olson



Tie Check June 5, 1975  
D. Dahl  
B. Sannerud  
G. Adams

TIE CHECK  
6-22-81  
P. ROSS  
P. HORNBY  
G. NEFFINGER

Swamp

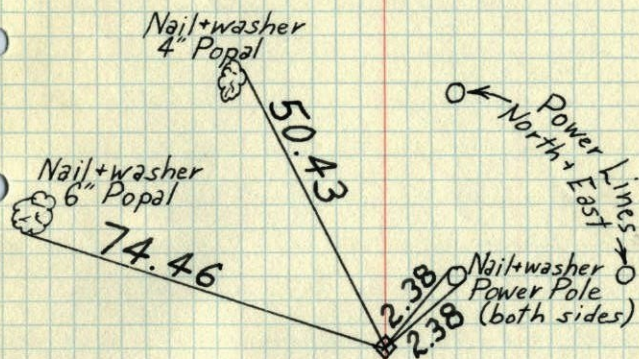
TIE CHECK  
June 25, 1989  
D. Ross  
G. Lips  
R. Bennett

TEMPERATURE CORRECTED  
AND HORIZONTALLY  
TAPED MEASUREMENTS

ROLAND W. ANDERSON  
COUNTY SURVEYOR  
ANOKA COUNTY, MINNESOTA

W $\frac{1}{4}$  Cor. Sec. 5-T32-R23

Granite Monument up 1.5'±



Tie Check  
July 18, 1966  
B. Rogers  
D. Powell  
J. Berry

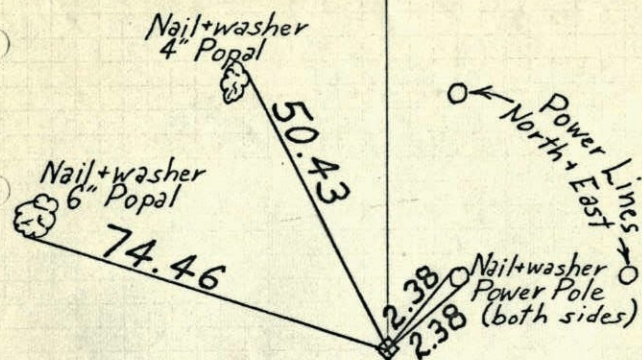
To be replaced  
with Cast Iron

TEMPERATURE CORRECTED ROLAND W. ANDERSON  
AND HORIZONTALLY COUNTY SURVEYOR  
TAPED MEASUREMENTS ANOKA COUNTY, MINNESOTA



W 1/4 Cor. Sec. 5 - T32 - R23

Granite Monument up 1.5'



Tie Check  
 July 18, 1966  
 B. Rogers  
 D. Powell  
 J. Berry

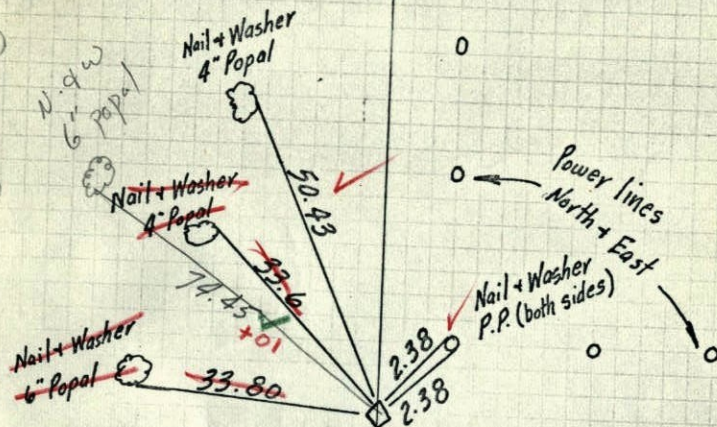
To be replaced  
 with  
 cast iron

TEMPERATURE CORRECTED  
 AND HORIZONTALLY  
 TAPED MEASUREMENTS

ROLAND W. ANDERSON  
 COUNTY SURVEYOR  
 ANOKA COUNTY, MINNESOTA

W 1/4 Cor. Sec. 5 T32-R23

Granite Monument up 1.5'



~~Retied~~ tape 45'  
 ties checked temp 85°  
 7/18/66  
 B. Rogers  
 D. Powell  
 J. Berry  
 7/20/64  
 M. D. Anderson  
 R. Carlson

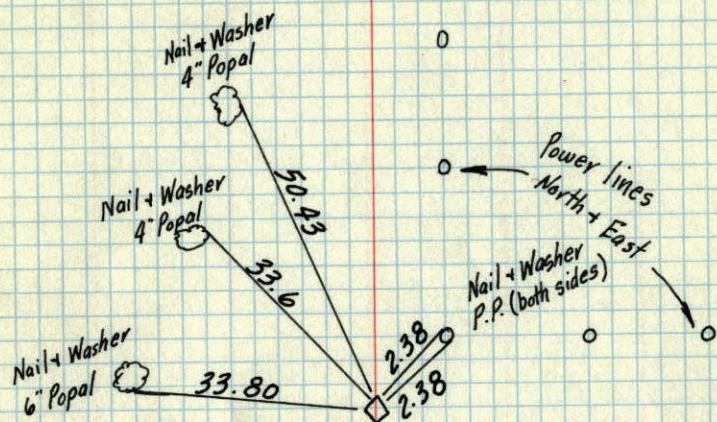
TEMPERATURE CORRECTED  
 AND HORIZONTALLY  
 TAPED MEASUREMENTS

ROLAND W. ANDERSON  
 COUNTY SURVEYOR  
 ANOKA COUNTY, MINNESOTA



8  
W 1/4 Cor. Sec. 5 T32-R23

Granite Monument up 1.5'



7/20/64

M. D. Anderson  
R. Carlson

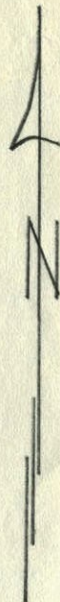
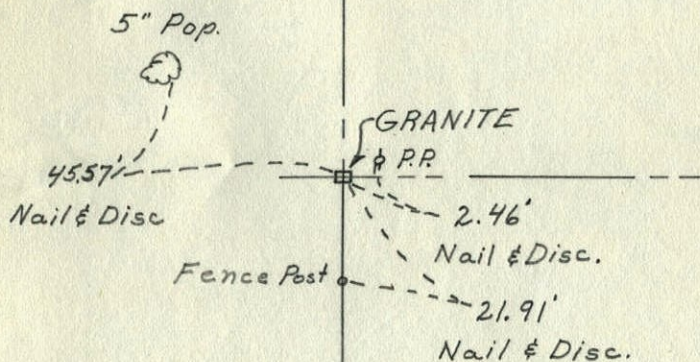
TEMPERATURE CORRECTED  
AND HORIZONTALLY  
TAPED MEASUREMENTS

ROLAND W. ANDERSON  
COUNTY SURVEYOR  
ANOKA COUNTY, MINNESOTA

June 16, 1961

W. 1/4 Cor. of Sec. 5-T. 32, R. 23

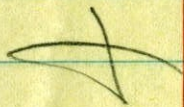
Granite down 1'



Submitted By  
R. M. KNUDSEN



APR. 1951

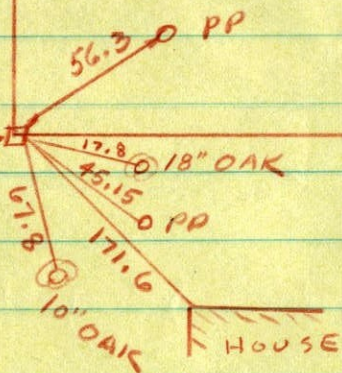


GRANITE MON.

Egan, Field & Novak

SW cor.

SEC. 5-32-23



APR. 1951



6" Pop. @

4" Pop. @

33.16'

77'

1.6'

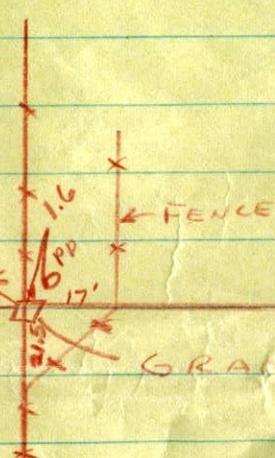
6' PP

17'

GRANITE MON.

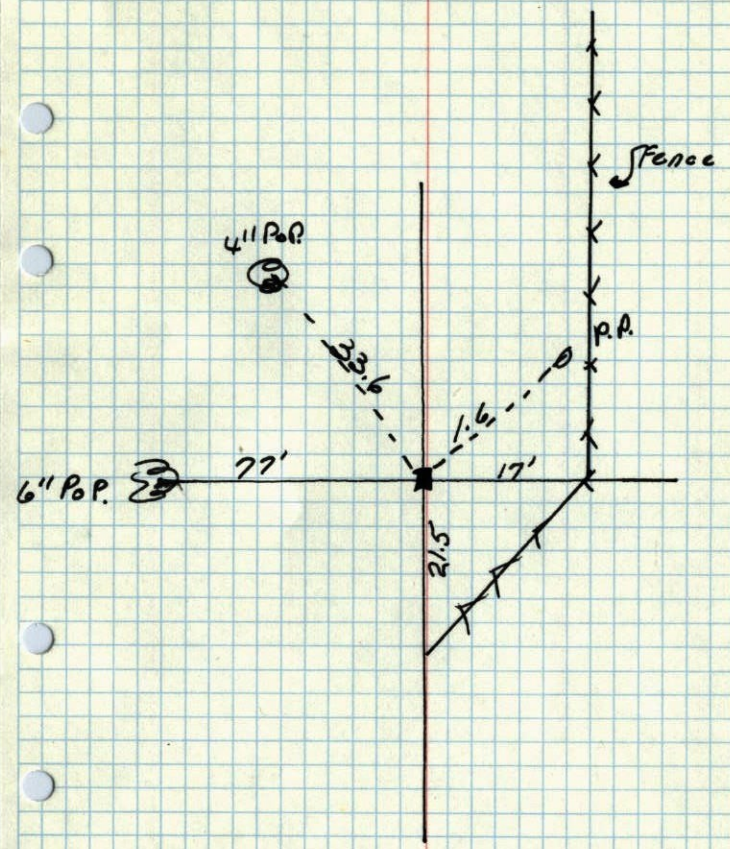
W 1/4 COR

SEC. 5-32-23





W 1/4 Cor. of Sec. 5 T. 32, R. 23  
Granite Mon.



Egan, Field & Novak